

West Saanich Rd between Wallace Dr and Municipal Boundary

March 10, 2019 To March 14, 2019



The data presented here is for information purposes only and should not be considered authoritative for construction, geotechnical, engineering, navigational, legal, or other site-specific uses. The information shared is owned by the Transportation Division of the Engineering Department at the District of Saanich. Accuracy is not guaranteed.

Start Date: 11-Mar-19
 Start Time: 0:00
 Station ID: M0040-02

Location 1: West Saanich Rd between Wallace Dr and Municipal Boundary

Note: Wallace Dr and Municipal Boundary

DATE:	March 11, 2019		March 12, 2019		March 13, 2019		March 14, 2019		March 15, 2019		WK AVG		WK AVG	HOURLY
	MON		TUE		WED		THURS		FRI		NB		CH 1+2	%
Time:	NB	SB	NB	SB	NB	SB	NB	SB	NB	SB	NB	SB		
12-1 AM					8	7	5	8	8	7	7	7	14	0.2%
1-2 AM					3	2	5	4	1	3	3	3	6	0.1%
2-3 AM					8	2	0	4	2	2	3	3	6	0.1%
3-4 AM					7	4	4	2	5	3	5	3	8	0.1%
4-5 AM					6	5	9	8	6	6	7	6	13	0.2%
5-6 AM					38	29	40	24	35	26	38	26	64	0.8%
6-7 AM					160	111	153	101	154	97	156	103	259	3.4%
7-8 AM					291	226	281	232	279	246	284	235	518	6.8%
8-9 AM					315	308	276	294	306	309	299	304	603	7.9%
9-10 AM					249	242	226	239	226	214	234	232	465	6.1%
10-11 AM					184	223	192	193	175	202	184	206	390	5.1%
11-12 PM					231	244	217	254	238	233	229	244	472	6.2%
12-1 PM					223	244	262	229	219	239	235	237	472	6.2%
1-2 PM					258	244	203	259	231	225	231	243	473	6.2%
2-3 PM					286	305	273	281	287	308	282	298	580	7.6%
3-4 PM					332	448	296	433	336	474	321	452	773	10.1%
4-5 PM					374	467	386	517	349	505	370	496	866	11.4%
5-6 PM					297	371	272	367	275	373	281	370	652	8.5%
6-7 PM					176	167	182	182	181	199	180	183	362	4.8%
7-8 PM					106	113	125	122	121	112	117	116	233	3.1%
8-9 PM					97	77	99	74	92	80	96	77	173	2.3%
9-10 PM					81	38	81	52	94	48	85	46	131	1.7%
10-11 PM					40	22	34	30	41	13	38	22	60	0.8%
11-12 AM					13	9	23	13	22	15	19	12	32	0.4%
LANES					3783	3908	3644	3922	3683	3939	3703	3923	7626	100.0%
TOTAL					7691		7566		7622		7630			
	MON		TUE		WED		THURS		FRI		WK AVG			

PEAK HOUR					TOTAL VEHICALS-PEAK PERIODS		2 HOUR PEAK INTERVALS				
MAX. 7 - 9 am PEAK HOUR	603	⇒	7.9%	between 8-9 AM	3583	⇒	6 HR TOTAL	2 HR AM (7 - 9 AM)			
MAX. 7 - 11 am PEAK HOUR	603	⇒	7.9%	between 8-9 AM	2639	⇒	4 HR TOTAL	VEH / HR	VEH / 2HR	2 HR %	
MAX. 11 am - 1 pm PEAK HOUR	472	⇒	6.2%	between 11-12 PM				7-8 AM	518	1121	14.7%
MAX. 11 am - 3 pm PEAK HOUR	580	⇒	7.6%	between 2-3 PM				8-9 AM	603		
MAX. 4 - 6 pm PEAK HOUR	866	⇒	11.4%	between 4-5 PM				2 HR NOON (11 - 1 PM)			
MAX. 3 - 6 pm PEAK HOUR	866	⇒	11.4%	between 4-5 PM				VEH / HR	VEH / 2HR	2 HR %	
								11-12 PM	472	944	12.4%
								12-1 PM	472		
								2 HR PM (4 - 6 PM)			
								VEH / HR	VEH / 2HR	2 HR %	
								4-5 PM	866	1518	19.9%
								5-6 PM	652		

West Saanich Rd between Wallace Dr and Municipal Boundary

Northbound

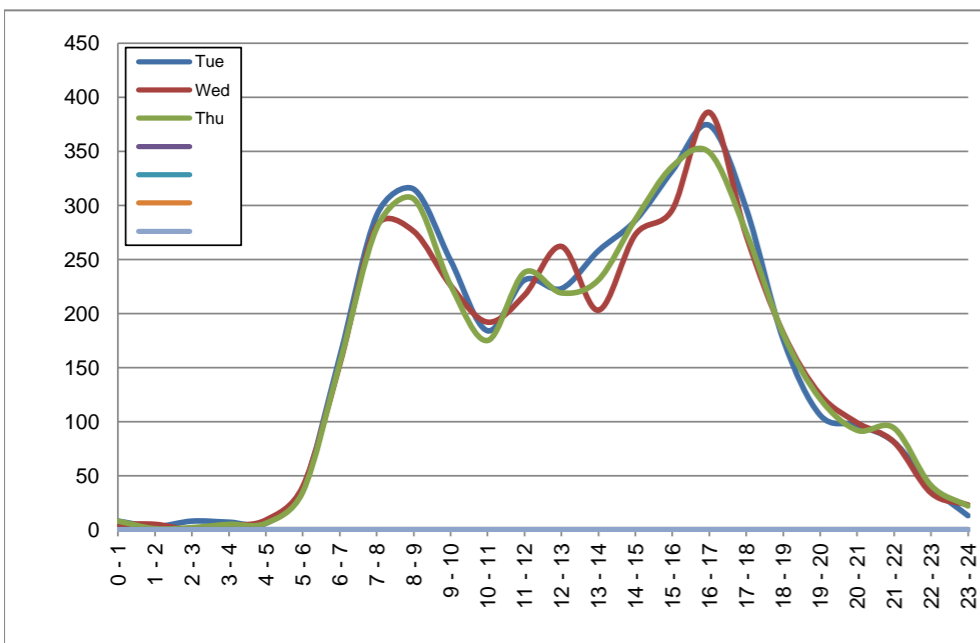
March 12, 2019 to March 14, 2019

Hourly Volumes

Time Period	Tue	Wed	Thu				
	Mar 12	Mar 13	Mar 14				
0 - 1	8	5	8				
1 - 2	3	5	1				
2 - 3	8	0	2				
3 - 4	7	4	5				
4 - 5	6	9	6				
5 - 6	38	40	35				
6 - 7	160	153	154				
7 - 8	291	281	279				
8 - 9	315	276	306				
9 - 10	249	226	226				
10 - 11	184	192	175				
11 - 12	231	217	238				
12 - 13	223	262	219				
13 - 14	258	203	231				
14 - 15	286	273	287				
15 - 16	332	296	336				
16 - 17	374	386	349				
17 - 18	297	272	275				
18 - 19	176	182	181				
19 - 20	106	125	121				
20 - 21	97	99	92				
21 - 22	81	81	94				
22 - 23	40	34	41				
23 - 24	13	23	22				
Day Total	3783	3644	3683				

15-Minute Volumes

Time Start	Tue	Wed	Thu				
	Mar 12	Mar 13	Mar 14				
0:00	3	1	7				
0:15	5	2	0				
0:30	0	2	0				
0:45	0	0	1				
1:00	0	3	1				
1:15	0	1	0				
1:30	1	1	0				
1:45	2	0	0				
2:00	3	0	0				
2:15	1	0	1				
2:30	1	0	0				
2:45	3	0	1				
3:00	2	1	1				
3:15	2	2	1				
3:30	1	0	2				
3:45	2	1	1				
4:00	1	3	0				
4:15	0	1	0				
4:30	1	0	0				
4:45	4	5	6				
5:00	7	4	4				
5:15	6	7	2				
5:30	11	11	16				
5:45	14	18	13				
6:00	20	15	16				
6:15	21	37	39				
6:30	57	43	48				
6:45	62	58	51				
7:00	66	56	74				
7:15	53	78	55				
7:30	77	64	70				
7:45	95	83	80				
8:00	70	70	79				
8:15	87	66	76				
8:30	71	70	67				
8:45	87	70	84				
9:00	80	56	60				
9:15	52	61	60				
9:30	66	51	55				
9:45	51	58	51				
10:00	38	50	43				
10:15	39	44	31				
10:30	54	50	47				
10:45	53	48	54				
11:00	50	46	62				
11:15	62	53	65				
11:30	62	64	50				
11:45	57	54	61				
12:00	48	63	48				
12:15	59	62	44				
12:30	54	74	61				
12:45	62	63	66				
13:00	62	44	59				
13:15	59	55	53				
13:30	59	56	58				
13:45	78	48	61				
14:00	71	81	75				
14:15	65	66	71				
14:30	66	60	59				
14:45	84	66	82				
15:00	84	69	81				
15:15	74	66	85				
15:30	99	83	92				
15:45	75	78	78				
16:00	98	96	92				
16:15	100	93	93				
16:30	74	93	80				
16:45	102	104	84				
17:00	79	71	78				
17:15	75	57	66				
17:30	80	79	73				
17:45	63	65	58				
18:00	56	51	53				
18:15	52	58	46				
18:30	39	42	39				
18:45	29	31	43				
19:00	33	28	31				
19:15	32	22	42				
19:30	22	35	27				
19:45	19	40	21				
20:00	19	22	21				
20:15	31	30	22				
20:30	20	27	26				
20:45	27	20	23				
21:00	20	17	22				
21:15	24	21	26				
21:30	20	17	24				
21:45	17	26	22				
22:00	16	11	13				
22:15	11	9	10				
22:30	11	6	8				
22:45	2	8	10				
23:00	4	7	9				
23:15	0	8	5				
23:30	4	4	3				
23:45	5	4	5				



Site notes:

West Saanich Rd between Wallace Dr and Municipal Boundary

Southbound

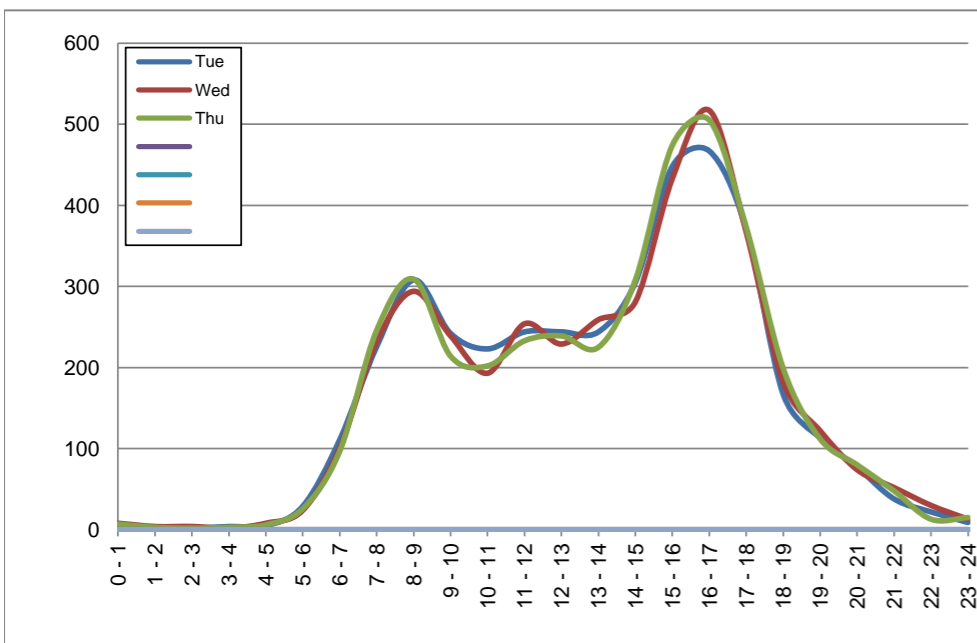
March 12, 2019 to March 14, 2019

Hourly Volumes

Time Period	Tue	Wed	Thu				
	Mar 12	Mar 13	Mar 14				
0 - 1	7	8	7				
1 - 2	2	4	3				
2 - 3	2	4	2				
3 - 4	4	2	3				
4 - 5	5	8	6				
5 - 6	29	24	26				
6 - 7	111	101	97				
7 - 8	226	232	246				
8 - 9	308	294	309				
9 - 10	242	239	214				
10 - 11	223	193	202				
11 - 12	244	254	233				
12 - 13	244	229	239				
13 - 14	244	259	225				
14 - 15	305	281	308				
15 - 16	448	433	474				
16 - 17	467	517	505				
17 - 18	371	367	373				
18 - 19	167	182	199				
19 - 20	113	122	112				
20 - 21	77	74	80				
21 - 22	38	52	48				
22 - 23	22	30	13				
23 - 24	9	13	15				
Day Total	3908	3922	3939				

15-Minute Volumes

Time Start	Tue	Wed	Thu				
	Mar 12	Mar 13	Mar 14				
0:00	3	3	0				
0:15	2	1	2				
0:30	0	2	1				
0:45	2	2	4				
1:00	0	1	3				
1:15	1	2	0				
1:30	0	1	0				
1:45	1	0	0				
2:00	0	2	0				
2:15	0	0	1				
2:30	0	1	0				
2:45	2	1	1				
3:00	4	0	1				
3:15	0	1	0				
3:30	0	1	0				
3:45	0	0	2				
4:00	1	1	2				
4:15	0	0	0				
4:30	4	3	2				
4:45	0	4	2				
5:00	4	3	3				
5:15	5	4	3				
5:30	6	5	9				
5:45	14	12	11				
6:00	18	20	13				
6:15	21	20	22				
6:30	33	29	29				
6:45	39	32	33				
7:00	48	54	43				
7:15	46	54	51				
7:30	65	53	76				
7:45	67	71	76				
8:00	97	79	79				
8:15	65	64	84				
8:30	85	74	77				
8:45	61	77	69				
9:00	73	61	53				
9:15	63	68	49				
9:30	53	69	55				
9:45	53	41	57				
10:00	47	48	53				
10:15	69	46	47				
10:30	55	52	46				
10:45	52	47	56				
11:00	78	61	63				
11:15	60	64	60				
11:30	50	76	44				
11:45	56	53	66				
12:00	65	52	62				
12:15	69	63	47				
12:30	57	54	62				
12:45	53	60	68				
13:00	68	62	57				
13:15	56	65	68				
13:30	56	67	51				
13:45	64	65	49				
14:00	61	55	76				
14:15	63	69	76				
14:30	98	70	76				
14:45	83	87	80				
15:00	96	110	117				
15:15	99	101	114				
15:30	113	105	132				
15:45	140	117	111				
16:00	124	103	117				
16:15	113	139	141				
16:30	126	130	126				
16:45	104	145	121				
17:00	118	110	117				
17:15	104	98	115				
17:30	77	95	80				
17:45	72	64	61				
18:00	61	56	65				
18:15	42	47	64				
18:30	36	35	37				
18:45	28	44	33				
19:00	33	36	37				
19:15	36	35	39				
19:30	26	25	20				
19:45	18	26	16				
20:00	18	20	20				
20:15	17	17	20				
20:30	15	16	22				
20:45	27	21	18				
21:00	15	16	15				
21:15	7	11	16				
21:30	9	9	9				
21:45	7	16	8				
22:00	5	11	5				
22:15	8	9	4				
22:30	3	7	1				
22:45	6	3	3				
23:00	1	5	5				
23:15	6	2	5				
23:30	0	0	1				
23:45	2	6	4				



Site notes:

Vehicle Speed Summary

Saanich Engineering Department

Count Id: **M0040-02**

Filename: **West Saanich Rd between Wallace Dr and Municipal Boundary-Mar-2019.xlsm**

Location: West Saanich Rd between Wallace Dr and Municipal Boundary

Note: Wallace Dr and Municipal Boundary

Direction: **North-South**

Dates: **March 10, 2019 To March 14, 2019**

Filtered data

AVG. SPEED	40 mph	65 km/h
50 % SPEED	40 mph	65 km/h
85 % SPEED	44 mph	71 km/h
95 % SPEED	47 mph	76 km/h

Location Map



West Saanich Rd between Wallace Dr and Municipal Boundary

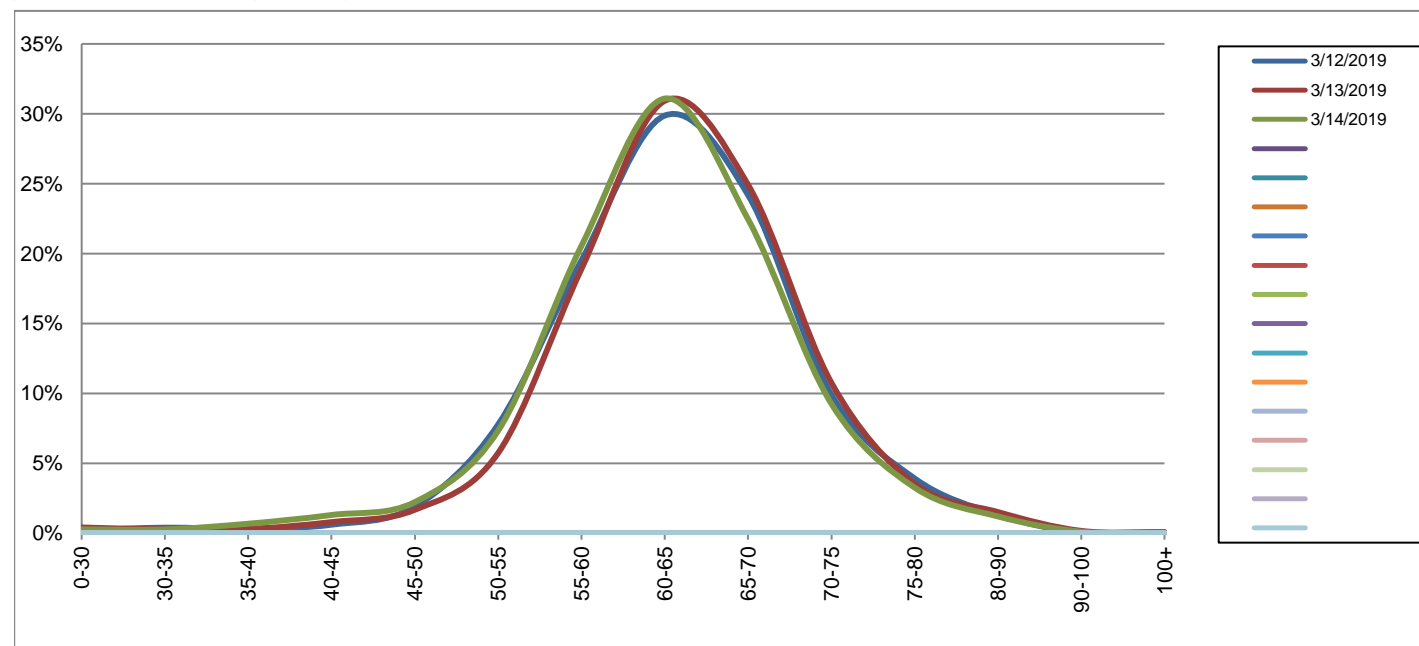
Northbound

March 12, 2019 to March 14, 2019

Daily Speed Bin Percentages														Daily Speed Bin Volumes														Total	Avg.	
Bin #	1	2	3	4	5	6	7	8	9	10	11	12	13	14	1	2	3	4	5	6	7	8	9	10	11	12	13	14	Volume	Speed
Bin Speeds	0-30	30-35	35-40	40-45	45-50	50-55	55-60	60-65	65-70	70-75	75-80	80-90	90-100	100+	0-30	30-35	35-40	40-45	45-50	50-55	55-60	60-65	65-70	70-75	75-80	80-90	90-100	100+		
3/12/2019	0.2%	0.4%	0.3%	0.6%	1.9%	7.8%	19.5%	29.9%	24.2%	9.9%	3.9%	1.3%	0.0%	0.1%	8	15	12	23	72	294	738	1130	915	375	148	50	1	2	3783	63
3/13/2019	0.4%	0.3%	0.3%	0.8%	1.7%	5.7%	18.9%	30.9%	24.9%	10.8%	3.5%	1.5%	0.2%	0.1%	15	10	11	29	61	209	689	1127	908	392	129	55	6	3	3644	64
3/14/2019	0.3%	0.3%	0.7%	1.3%	2.2%	7.3%	20.6%	31.1%	22.5%	9.3%	3.3%	1.2%	0.1%	0.0%	10	10	25	48	82	270	757	1145	827	341	120	44	4	0	3683	63
Total	0.3%	0.3%	0.4%	0.9%	1.9%	7.0%	19.7%	30.6%	23.9%	10.0%	3.6%	1.3%	0.1%	0.0%	33	35	48	100	215	773	2184	3402	2650	1108	397	149	11	5	11110	63

Speed Data Summary

Bin #	1	2	3	4	5	6	7	8	9	10	11	12	13	14	Total
Bin Speeds	0-30	30-35	35-40	40-45	45-50	50-55	55-60	60-65	65-70	70-75	75-80	80-90	90-100	100+	
Survey Total	33	35	48	100	215	773	2184	3402	2650	1108	397	149	11	5	11110
% Total	0.3%	0.3%	0.4%	0.9%	1.9%	7.0%	19.7%	30.6%	23.9%	10.0%	3.6%	1.3%	0.1%	0.0%	100%
Accumulated %	0.3%	0.6%	1.0%	1.9%	3.9%	10.8%	30.5%	61.1%	85.0%	94.9%	98.5%	99.9%	100.0%	100%	
Inverse Accum. %	99.7%	99.4%	99.0%	98.1%	96.1%	89.2%	69.5%	38.9%	15.0%	5.1%	1.5%	0.1%	0.0%	0.0%	
Average Speed	63 KM/H														



Site notes:

West Saanich Rd between Wallace Dr and Municipal Boundary

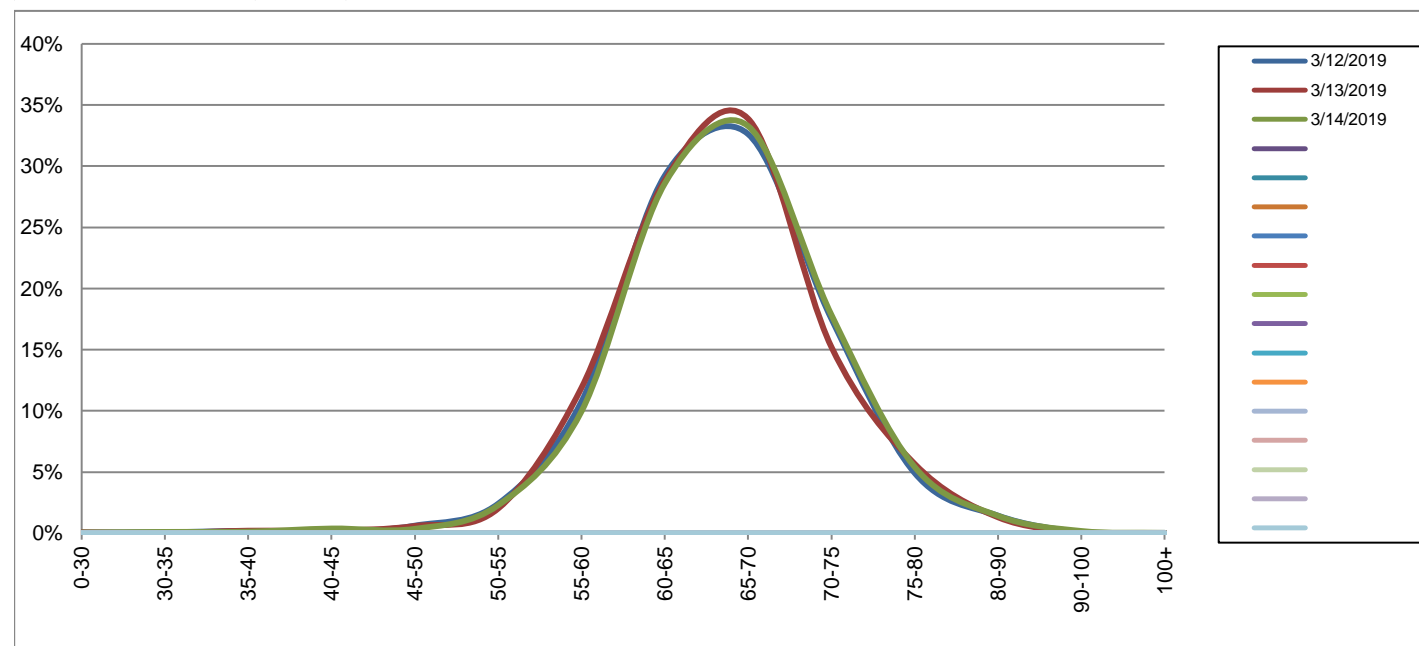
Southbound

March 12, 2019 to March 14, 2019

Daily Speed Bin Percentages														Daily Speed Bin Volumes														Total	Avg.	
Bin #	1	2	3	4	5	6	7	8	9	10	11	12	13	14	1	2	3	4	5	6	7	8	9	10	11	12	13	14	Volume	Speed
Bin Speeds	0-30	30-35	35-40	40-45	45-50	50-55	55-60	60-65	65-70	70-75	75-80	80-90	90-100	100+	0-30	30-35	35-40	40-45	45-50	50-55	55-60	60-65	65-70	70-75	75-80	80-90	90-100	100+		
3/12/2019	0.1%	0.1%	0.2%	0.1%	0.6%	2.4%	10.7%	29.2%	32.6%	17.5%	4.9%	1.4%	0.1%	0.0%	2	3	7	3	24	94	420	1142	1275	685	192	56	4	1	3908	66
3/13/2019	0.1%	0.0%	0.2%	0.2%	0.6%	2.0%	11.9%	28.8%	33.9%	15.2%	5.7%	1.3%	0.1%	0.0%	3	1	8	8	23	79	466	1131	1329	597	222	51	4	0	3922	66
3/14/2019	0.1%	0.1%	0.1%	0.4%	0.4%	2.3%	10.0%	28.6%	33.3%	17.8%	5.4%	1.4%	0.2%	0.0%	2	4	5	15	14	90	392	1126	1311	703	213	56	7	1	3939	66
Total	0.1%	0.1%	0.2%	0.2%	0.5%	2.2%	10.9%	28.9%	33.3%	16.9%	5.3%	1.4%	0.1%	0.0%	7	8	20	26	61	263	1278	3399	3915	1985	627	163	15	2	11769	66

Speed Data Summary

Bin #	1	2	3	4	5	6	7	8	9	10	11	12	13	14	Total
Bin Speeds	0-30	30-35	35-40	40-45	45-50	50-55	55-60	60-65	65-70	70-75	75-80	80-90	90-100	100+	
Survey Total	7	8	20	26	61	263	1278	3399	3915	1985	627	163	15	2	11769
% Total	0.1%	0.1%	0.2%	0.2%	0.5%	2.2%	10.9%	28.9%	33.3%	16.9%	5.3%	1.4%	0.1%	0.0%	100%
Accumulated %	0.1%	0.1%	0.3%	0.5%	1.0%	3.3%	14.1%	43.0%	76.3%	93.1%	98.5%	99.9%	100.0%	100%	
Inverse Accum. %	99.9%	99.9%	99.7%	99.5%	99.0%	96.7%	85.9%	57.0%	23.7%	6.9%	1.5%	0.1%	0.0%	0.0%	
Average Speed	66 KM/H														



Site notes:

West Saanich Rd between Wallace Dr and Municipal Boundary

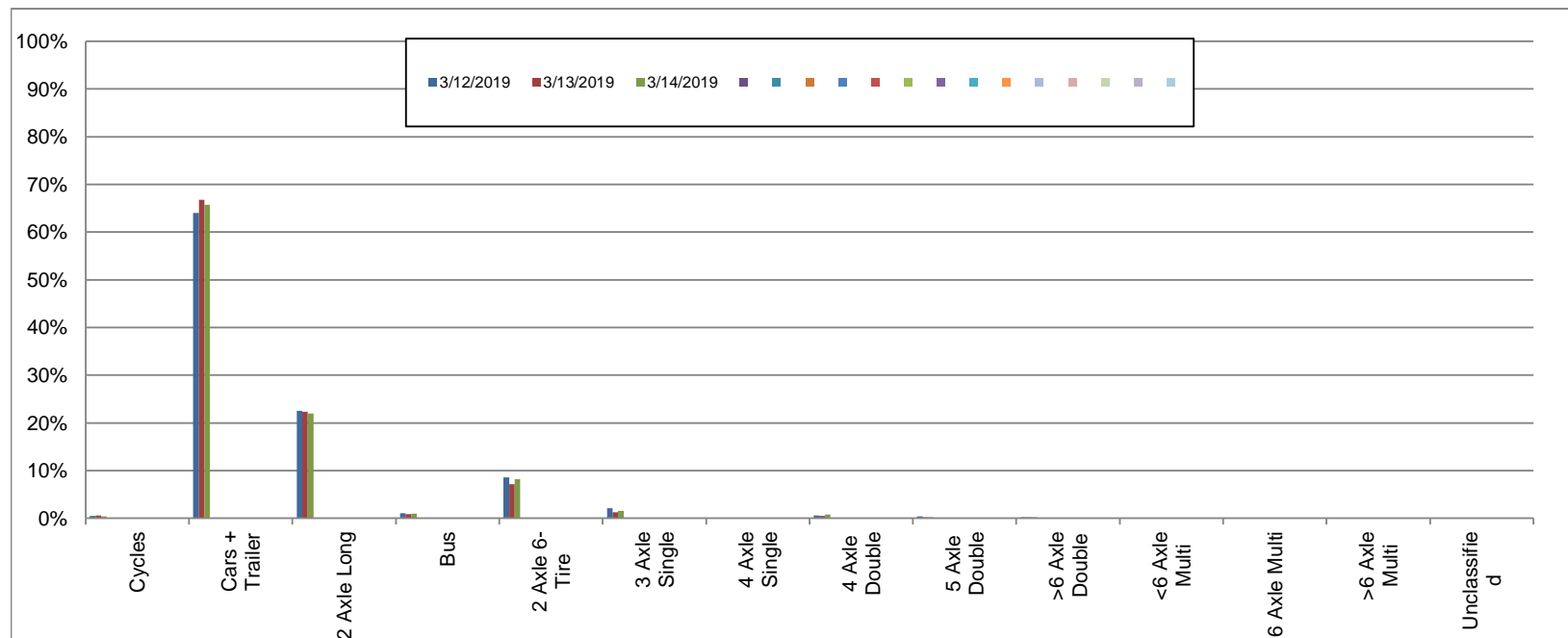
Northbound

March 12, 2019 to March 14, 2019

Daily Class Bin Percentages															Daily Class Bin Volumes										Total Volume				
Bin #	1	2	3	4	5	6	7	8	9	10	11	12	13	14	1	2	3	4	5	6	7	8	9	10		11	12	13	14
Bin Class	Cycles	Cars + Trailer	2 Axle Long	Bus	2 Axle 6-Tire	3 Axle Single	4 Axle Single	4 Axle Double	5 Axle Double	>6 Axle Double	<6 Axle Multi	6 Axle Multi	>6 Axle Multi	Unclassified	Cycles	Cars + Trailer	2 Axle Long	Bus	2 Axle 6-Tire	3 Axle Single	4 Axle Single	4 Axle Double	5 Axle Double	>6 Axle Double	<6 Axle Multi	6 Axle Multi	>6 Axle Multi	Unclassified	
3/12/2019	0.4%	64.0%	22.5%	1.1%	8.5%	2.1%	0.1%	0.6%	0.4%	0.2%	0.0%	0.0%	0.0%	0.1%	17	2423	852	40	323	80	2	23	14	6	0	0	1	2	3783
3/13/2019	0.6%	66.7%	22.3%	0.9%	7.2%	1.2%	0.0%	0.5%	0.2%	0.2%	0.0%	0.0%	0.0%	0.1%	23	2432	814	32	261	44	1	17	8	7	0	0	0	5	3644
3/14/2019	0.4%	65.7%	21.9%	1.0%	8.2%	1.5%	0.1%	0.8%	0.2%	0.2%	0.0%	0.0%	0.0%	0.1%	16	2421	808	36	301	55	2	28	7	7	0	0	0	2	3683
Total	0.5%	65.5%	22.3%	1.0%	8.0%	1.6%	0.0%	0.6%	0.3%	0.2%	0.0%	0.0%	0.0%	0.1%	56	7276	2474	108	885	179	5	68	29	20	0	0	1	9	11110

Class Data Summary

Bin #	1	2	3	4	5	6	7	8	9	10	11	12	13	14	Total Volume
Bin Class	Cycles	Cars + Trailer	2 Axle Long	Bus	2 Axle 6-Tire	3 Axle Single	4 Axle Single	4 Axle Double	5 Axle Double	>6 Axle Double	<6 Axle Multi	6 Axle Multi	>6 Axle Multi	Unclassified	Total Volume
Survey Total	56	7276	2474	108	885	179	5	68	29	20	0	0	1	9	11110
% Total	0.5%	65.5%	22.3%	1.0%	8.0%	1.6%	0.0%	0.6%	0.3%	0.2%	0.0%	0.0%	0.0%	0.1%	100%
Accumulated %	0.5%	66.0%	88.3%	89.2%	97.2%	98.8%	98.9%	99.5%	99.7%	99.9%	99.9%	99.9%	99.9%	100.0%	
Inv. Accum. %	99.5%	34.0%	11.7%	10.8%	2.8%	1.2%	1.1%	0.5%	0.3%	0.1%	0.1%	0.1%	0.1%	0.0%	



Classification Descriptions

Bin #	Bin Description
1	Motorcycles
2	Passenger cars, including those with recreational trailers
3	2-axle pick-ups, vans, and RVs, including those with recreational trailers
4	Buses
5	2-axle, 6-tire single units
6	3-axle single units
7	4-axle single units
8	3-axle or 4-axle double unit
9	5-axle double unit
10	6-, 7-, or 8-axle double unit
11	5-axle multiple unit
12	6-axle multiple unit
13	7-or-more-axle multiple unit
14	Vehicles that could not be classified

Site notes:

West Saanich Rd between Wallace Dr and Municipal Boundary

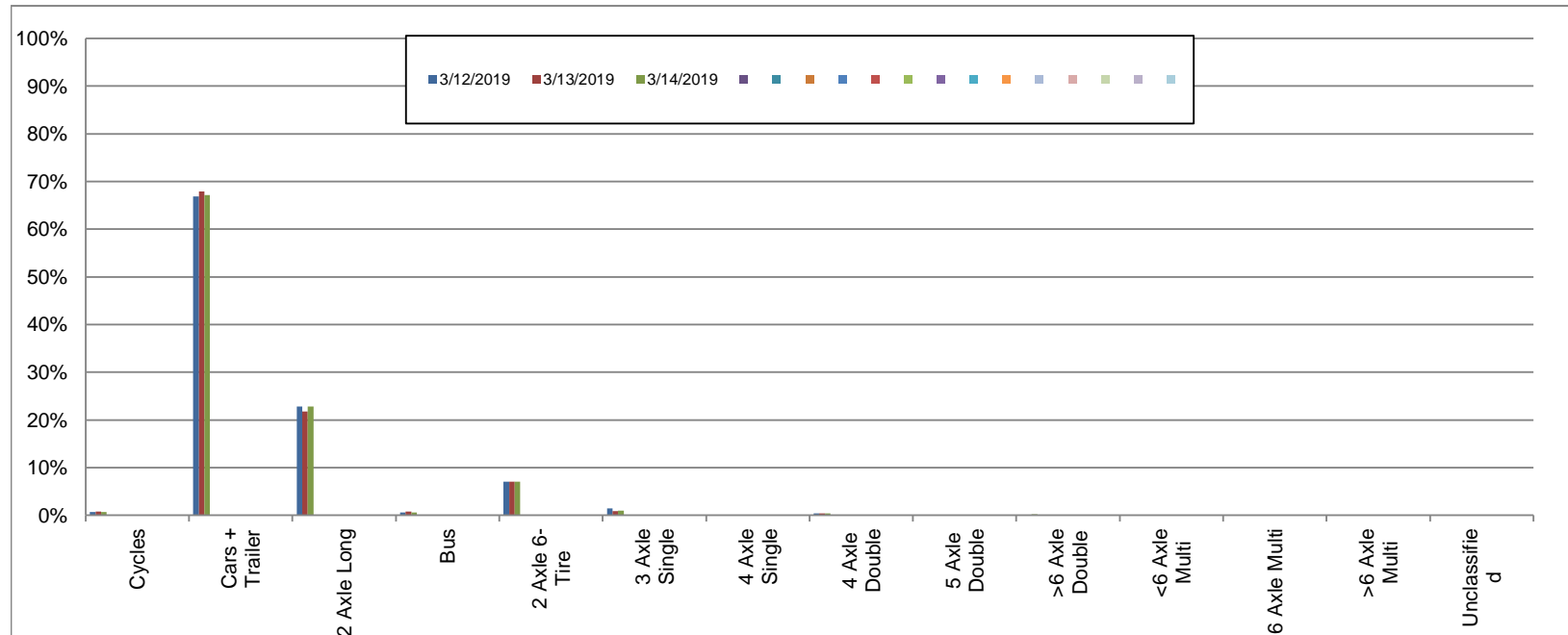
Southbound

March 12, 2019 to March 14, 2019

Daily Class Bin Percentages															Daily Class Bin Volumes														
Bin #	1	2	3	4	5	6	7	8	9	10	11	12	13	14	1	2	3	4	5	6	7	8	9	10	11	12	13	14	Total Volume
Bin Class	Cycles	Cars + Trailer	2 Axle Long	Bus	2 Axle 6-Tire	3 Axle Single	4 Axle Single	4 Axle Double	5 Axle Double	>6 Axle Double	<6 Axle Multi	6 Axle Multi	>6 Axle Multi	Unclassified	Cycles	Cars + Trailer	2 Axle Long	Bus	2 Axle 6-Tire	3 Axle Single	4 Axle Single	4 Axle Double	5 Axle Double	>6 Axle Double	<6 Axle Multi	6 Axle Multi	>6 Axle Multi	Unclassified	Total Volume
3/12/2019	0.7%	66.8%	22.8%	0.6%	7.1%	1.4%	0.0%	0.4%	0.1%	0.1%	0.0%	0.0%	0.0%	0.0%	26	2612	891	24	277	55	0	14	4	4	0	0	0	1	3908
3/13/2019	0.8%	67.9%	21.7%	0.8%	7.1%	0.8%	0.1%	0.4%	0.1%	0.1%	0.0%	0.0%	0.1%	0.1%	32	2664	852	31	278	33	2	17	4	3	0	0	2	4	3922
3/14/2019	0.7%	67.1%	22.8%	0.6%	7.1%	0.9%	0.1%	0.4%	0.1%	0.2%	0.0%	0.0%	0.0%	0.1%	26	2644	900	23	279	37	2	14	3	7	0	0	0	4	3939
Total	0.7%	67.3%	22.5%	0.7%	7.1%	1.1%	0.0%	0.4%	0.1%	0.1%	0.0%	0.0%	0.0%	0.1%	84	7920	2643	78	834	125	4	45	11	14	0	0	2	9	11769

Class Data Summary

Bin #	1	2	3	4	5	6	7	8	9	10	11	12	13	14	Total Volume
Bin Class	Cycles	Cars + Trailer	2 Axle Long	Bus	2 Axle 6-Tire	3 Axle Single	4 Axle Single	4 Axle Double	5 Axle Double	>6 Axle Double	<6 Axle Multi	6 Axle Multi	>6 Axle Multi	Unclassified	Total Volume
Survey Total	84	7920	2643	78	834	125	4	45	11	14	0	0	2	9	11769
% Total	0.7%	67.3%	22.5%	0.7%	7.1%	1.1%	0.0%	0.4%	0.1%	0.1%	0.0%	0.0%	0.0%	0.1%	100%
Accumulated %	0.7%	68.0%	90.5%	91.1%	98.2%	99.3%	99.3%	99.7%	99.8%	99.9%	99.9%	99.9%	99.9%	100.0%	
Inv. Accum. %	99.3%	32.0%	9.5%	8.9%	1.8%	0.7%	0.7%	0.3%	0.2%	0.1%	0.1%	0.1%	0.1%	0.0%	



Classification Descriptions

Bin #	Bin Description
1	Motorcycles
2	Passenger cars, including those with recreational trailers
3	2-axle pick-ups, vans, and RVs, including those with recreational trailers
4	Buses
5	2-axle, 6-tire single units
6	3-axle single units
7	4-axle single units
8	3-axle or 4-axle double unit
9	5-axle double unit
10	6-, 7-, or 8-axle double unit
11	5-axle multiple unit
12	6-axle multiple unit
13	7-or-more-axle multiple unit
14	Vehicles that could not be classified

Site notes: